

Upute za udaljeno korištenje programskih sustava Matlab i Mathematica

[Potreban software](#)

[Spajanje na računalni sustav na fakultetu](#)

[Pokretanje programa](#)

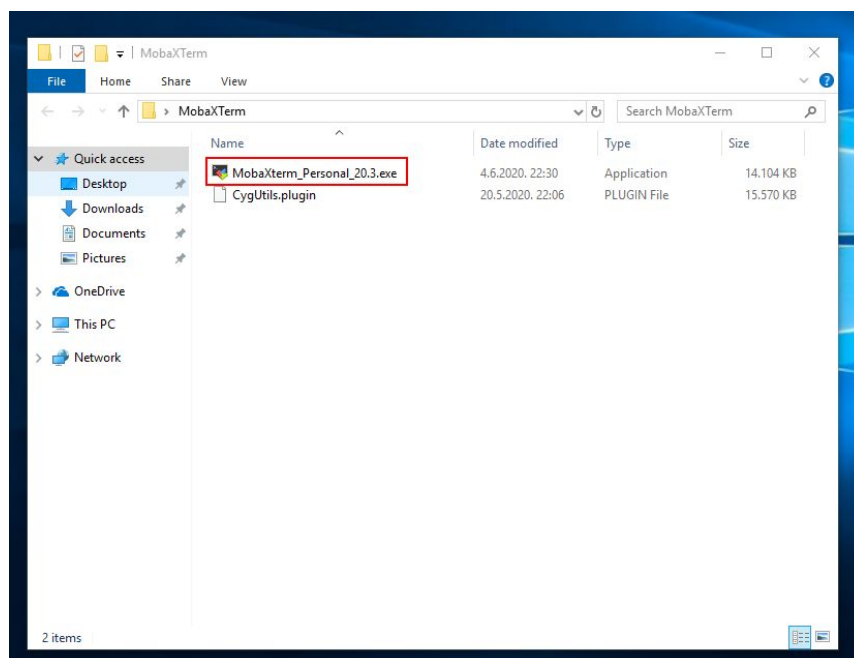
Potreban software

Kako bi mogli koristiti programske sustave Matlab i Matematika od kuće potrebno je skinuti program MobaXterm sa stranice <https://mobaxterm.mobatek.net/>

Direktni linkovi:

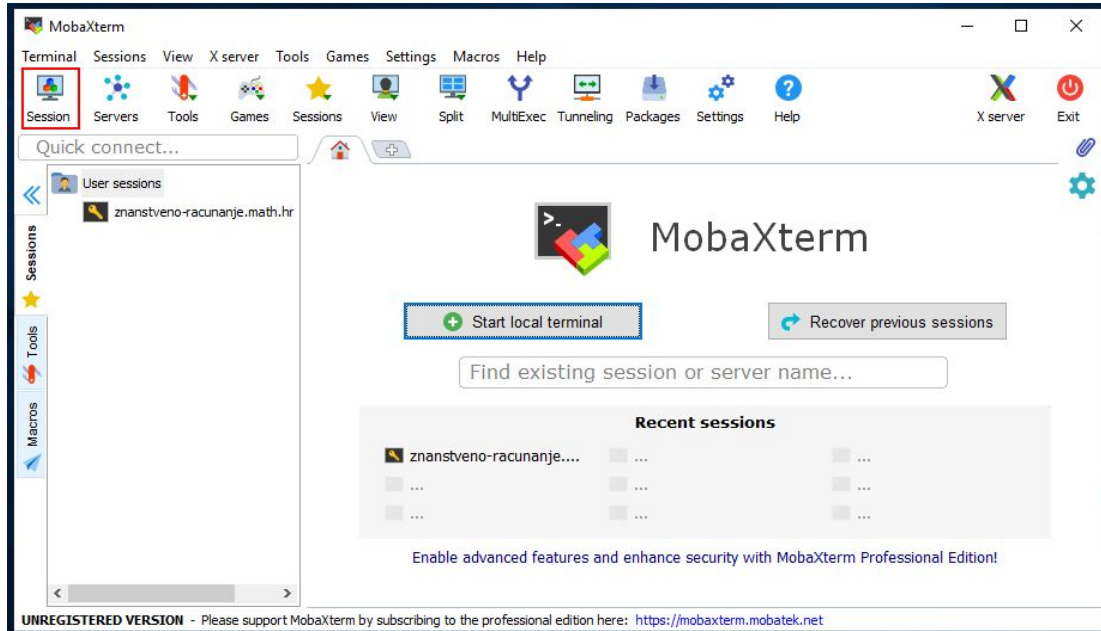
- verzija bez instalacije:
https://download.mobatek.net/2032020060430358/MobaXterm_Portable_v20.3.zip
- Verzija za instalaciju:
https://download.mobatek.net/2032020060430358/MobaXterm_Installer_v20.3.zip

Preporučujemo verziju bez instalacije koju je dovoljno samo downloadati na računalo i raspakirati sve datoteke iz arhive u bilo koji direktorij na računalu te pokrenuti program klikom na ikonu **MobaXterm_Personal_20.3.exe**

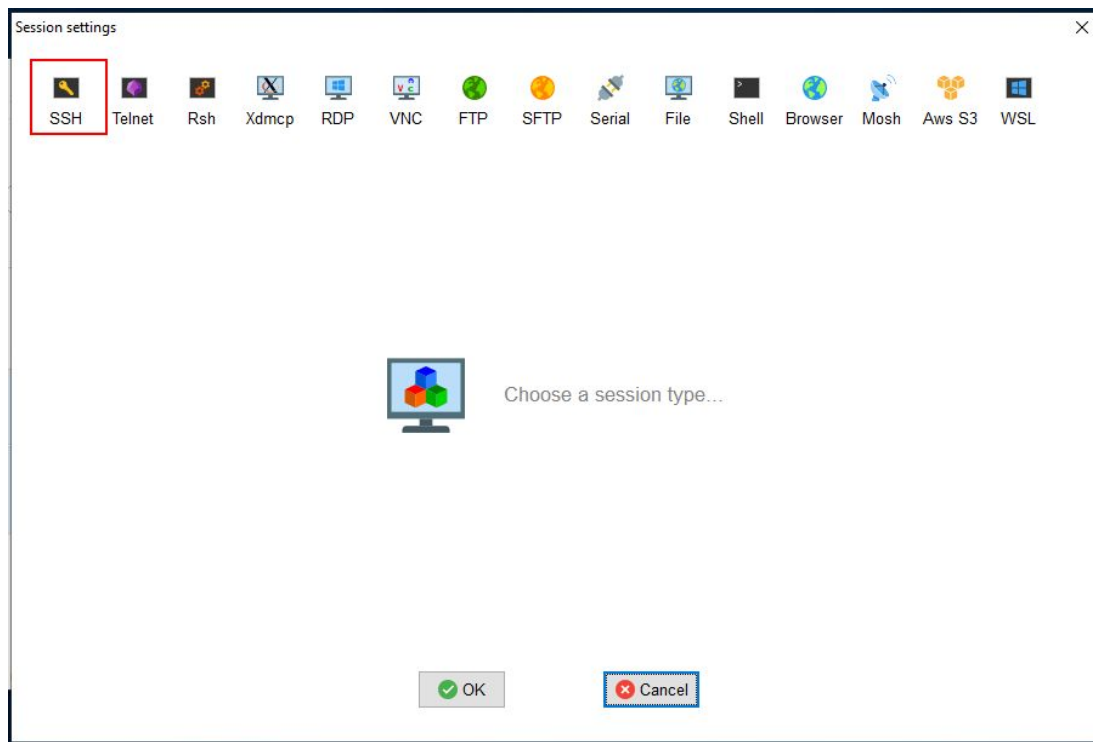


Spajanje na računalni sustav na fakultetu

Nakon pokretanja programa MobaXterm kliknite na ikonu Session na alatnoj traci.



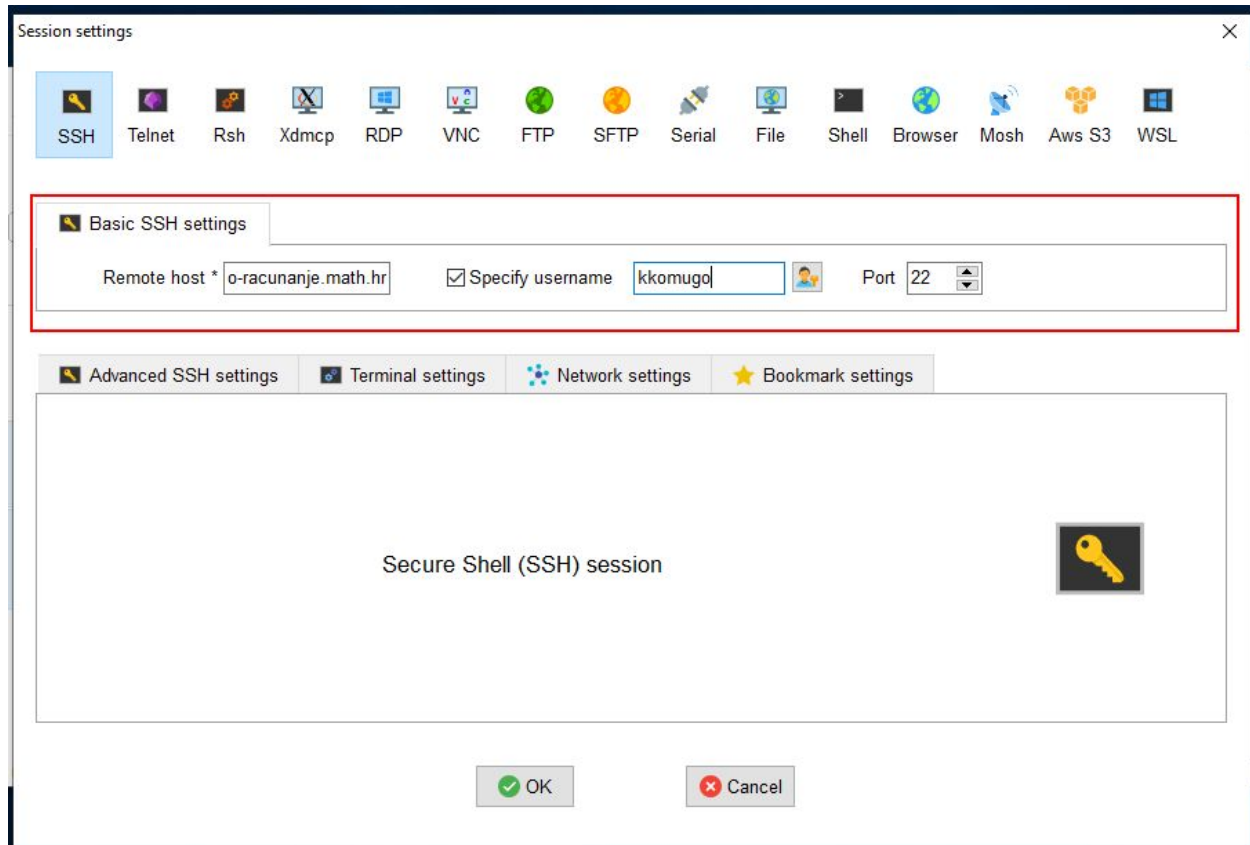
U prozoru koji se otvori kliknite na ikonu SSH u gornjem lijevom kutu prozora.



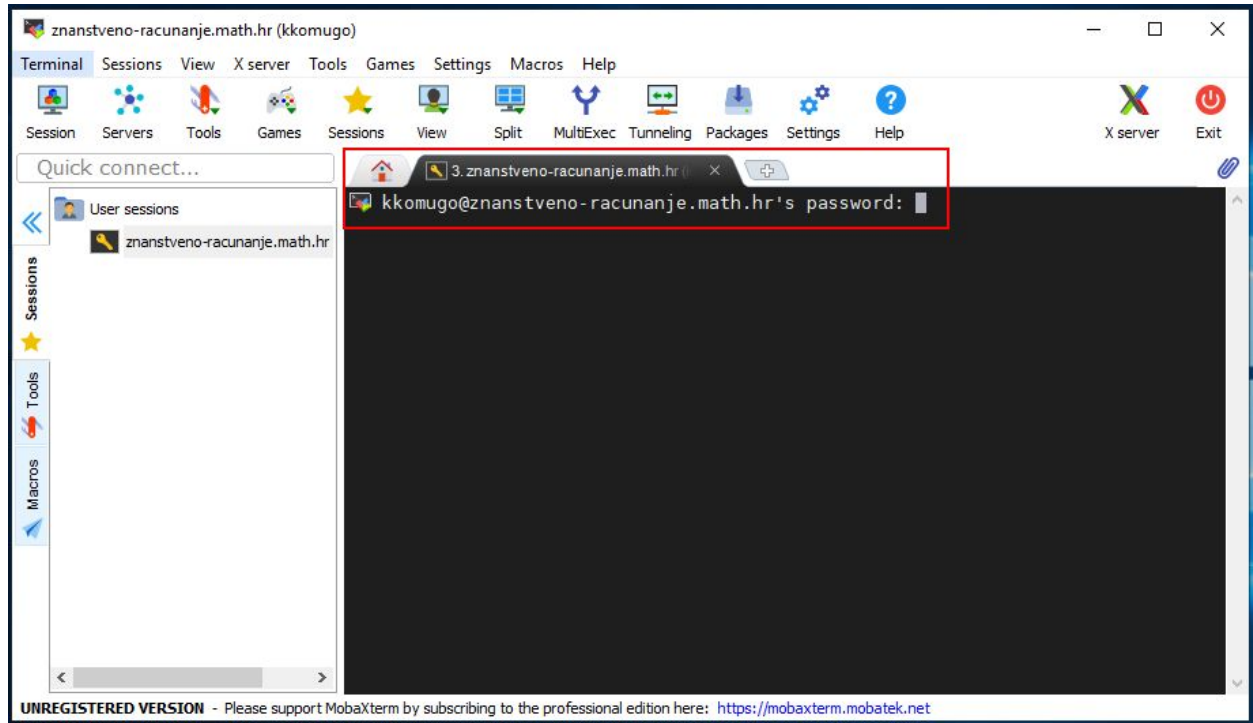
U sljedećem prozoru upišite sljedeće podatke:

- Remote host: **znanstveno-racunanje.math.hr**
- Specify username: vaše korisničko ime, isto koje koristite za računala u računalnim učionicama na fakultetu (obavezno **bez** dijela .math@pmf.hr)
- Port: 22

Nakon toga kliknite na tipku OK u donjem dijelu prozora.



U središnjem dijelu prozora pojavit će se poruka kojom program traži da upišete svoju lozinku. Lozinka za spajanje je vaša lozinka s kojom se prijavljujete na računala u računalnim učionicama. Nakon upisivanja lozinke program će vam ponuditi da spremi lozinku kako je ne bi morali upisivati kod narednih spajanja. Ako to želite, kliknite Yes, inače kliknite No.

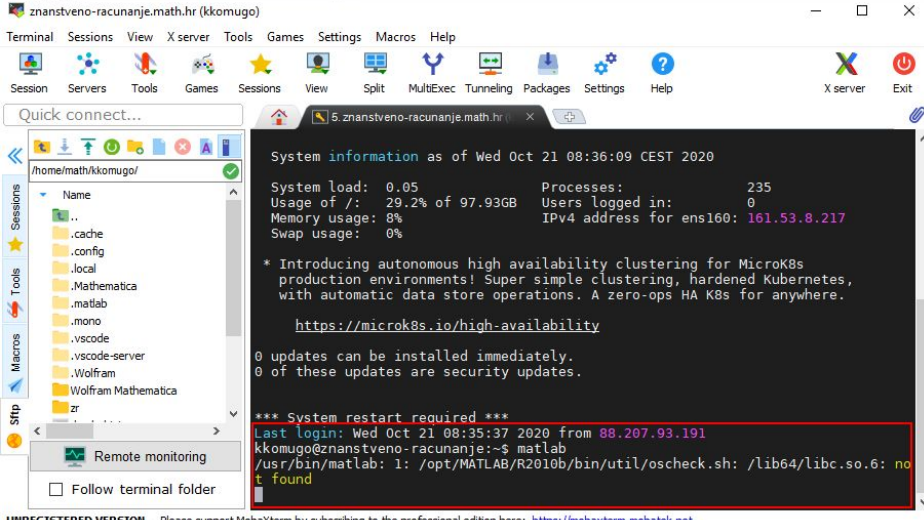


Pokretanje programa

Za pokretanje **Matlaba** u središnjem prozoru programa, iza znaka \$, napišite

matlab

te pričekajte nekoliko sekundi da se Matlab pokrene.



```
znanstveno-racunanje.math.hr (kkomugo)
Terminal Sessions View X server Tools Games Settings Macros Help
Session Servers Tools Games Sessions View Split MultiExec Tunneling Packages Settings Help X server Exit

Quick connect...
/home/math/kkomugo/
Name
.cache
.config
.local
.Mathematica
.matlab
.mono
.vscod
.vscod-server
.Wolfram
Wolfram Mathematica
zr
Remote monitoring
Follow terminal folder

System information as of Wed Oct 21 08:36:09 CEST 2020
System load: 0.05          Processes:          235
Usage of /: 29.2% of 97.93GB  Users logged in:  0
Memory usage: 8%          IPv4 address for ens160: 161.53.8.217
Swap usage: 0%

* Introducing autonomous high availability clustering for MicroK8s
production environments! Super simple clustering, hardened Kubernetes,
with automatic data store operations. A zero-ops HA K8s for anywhere.

https://microk8s.io/high-availability

0 updates can be installed immediately.
0 of these updates are security updates.

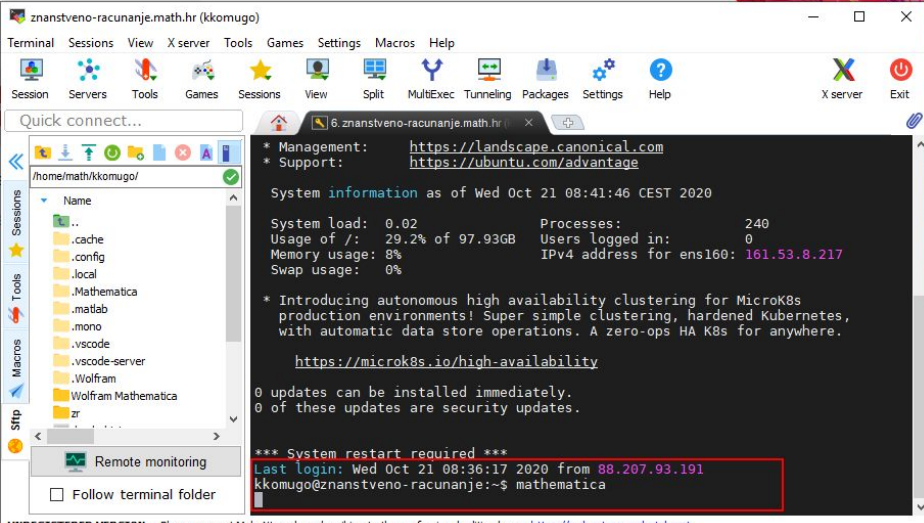
*** System restart required ***
Last login: Wed Oct 21 08:35:37 2020 from 88.207.93.191
kkomugo@znanstveno-racunanje:~$ matlab
/usr/bin/matlab: 1: /opt/MATLAB/R2010b/bin/util/oscheck.sh: /lib64/libc.so.6: no
t found

UNREGISTERED VERSION - Please support MobaXterm by subscribing to the professional edition here: https://mobaxterm.mobatek.net
```

Za pokretanje **Matematice** u središnjem prozoru programa, iza znaka \$, napišite

mathematica

te pričekajte nekoliko sekundi da se Mathematica pokrene.



```
znanstveno-racunanje.math.hr (kkomugo)
Terminal Sessions View X server Tools Games Settings Macros Help
Session Servers Tools Games Sessions View Split MultiExec Tunneling Packages Settings Help X server Exit

Quick connect...
/home/math/kkomugo/
Name
.cache
.config
.local
.Mathematica
.matlab
.mono
.vscod
.vscod-server
.Wolfram
Wolfram Mathematica
zr
Remote monitoring
Follow terminal folder

* Management: https://landscape.canonical.com
* Support: https://ubuntu.com/advantage

System information as of Wed Oct 21 08:41:46 CEST 2020
System load: 0.02          Processes:          240
Usage of /: 29.2% of 97.93GB  Users logged in:  0
Memory usage: 8%          IPv4 address for ens160: 161.53.8.217
Swap usage: 0%

* Introducing autonomous high availability clustering for MicroK8s
production environments! Super simple clustering, hardened Kubernetes,
with automatic data store operations. A zero-ops HA K8s for anywhere.

https://microk8s.io/high-availability

0 updates can be installed immediately.
0 of these updates are security updates.

*** System restart required ***
Last login: Wed Oct 21 08:36:17 2020 from 88.207.93.191
kkomugo@znanstveno-racunanje:~$ mathematica

UNREGISTERED VERSION - Please support MobaXterm by subscribing to the professional edition here: https://mobaxterm.mobatek.net
```